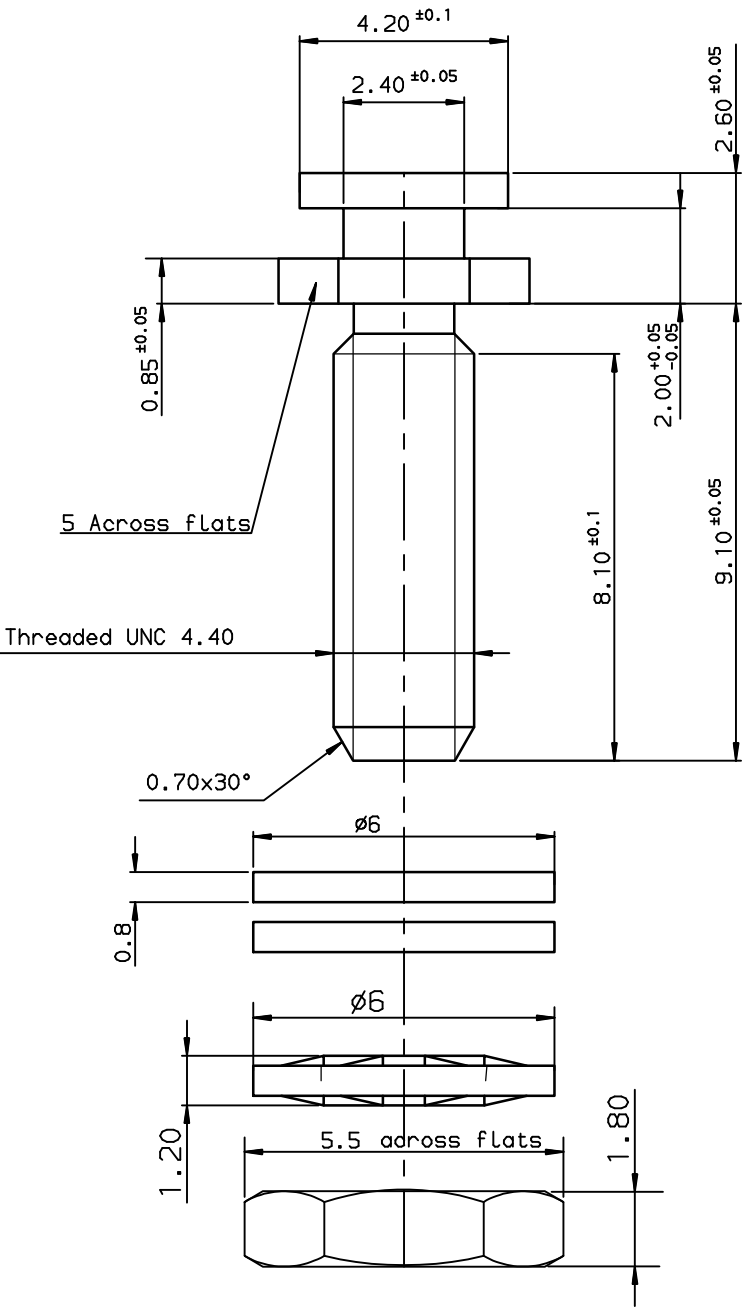




Copyright FCI.

REV F - 2006-04-17



TECHNICAL CHARACTERISTICS :

- Screw locks: steel, tin plated .
- Locking washer: steel, tin plated .
- Nuts and washers : steel, tin plated .
- Packaging : per 100 pieces .
- Corrosion resistance : 50 hour exposure to salt spray .

NOTE:RoHS INFORMATIONS

- The "LF" products meet European union Directives and other country regulations as described in GS-22-008.
- Plating Sn (pure bright) over copper
- Packaging spec: see GS-14-920

Part number	863082T
Part number	863082TLF

rev	ecn no	dr	date
A	-	JAR	2001/09/24
B	LS05-0026	MPE	2005/07/08
C	LS06-0095	LGO	2006/06/22
-	-	-	-
-	-	-	-
-	-	-	-

www.fciconnect.com		surface ISO 1302	tolerance std ISO 406 ISO 1101	projection mm
Dr JARRY 2001/09/24		TOLERANCES UNLESS OTHERWISE SPECIFIED		size A3
Eng PESSION 2001/09/24	Chr PESSION 2001/09/24	ANGULAR	LINEAR	Scale 10
Appr PESSION 2001/09/24	Product family	0.x ±0.1	0.xx ±0.1	ECN LS06-0095
FCI		0.xxx ±0.1	D-SUB	Spec ref -
title MOUNTING POSTS		catalog no		Rev. C
chg no		C01-8655-1553		sheet 1 of 1

European Views